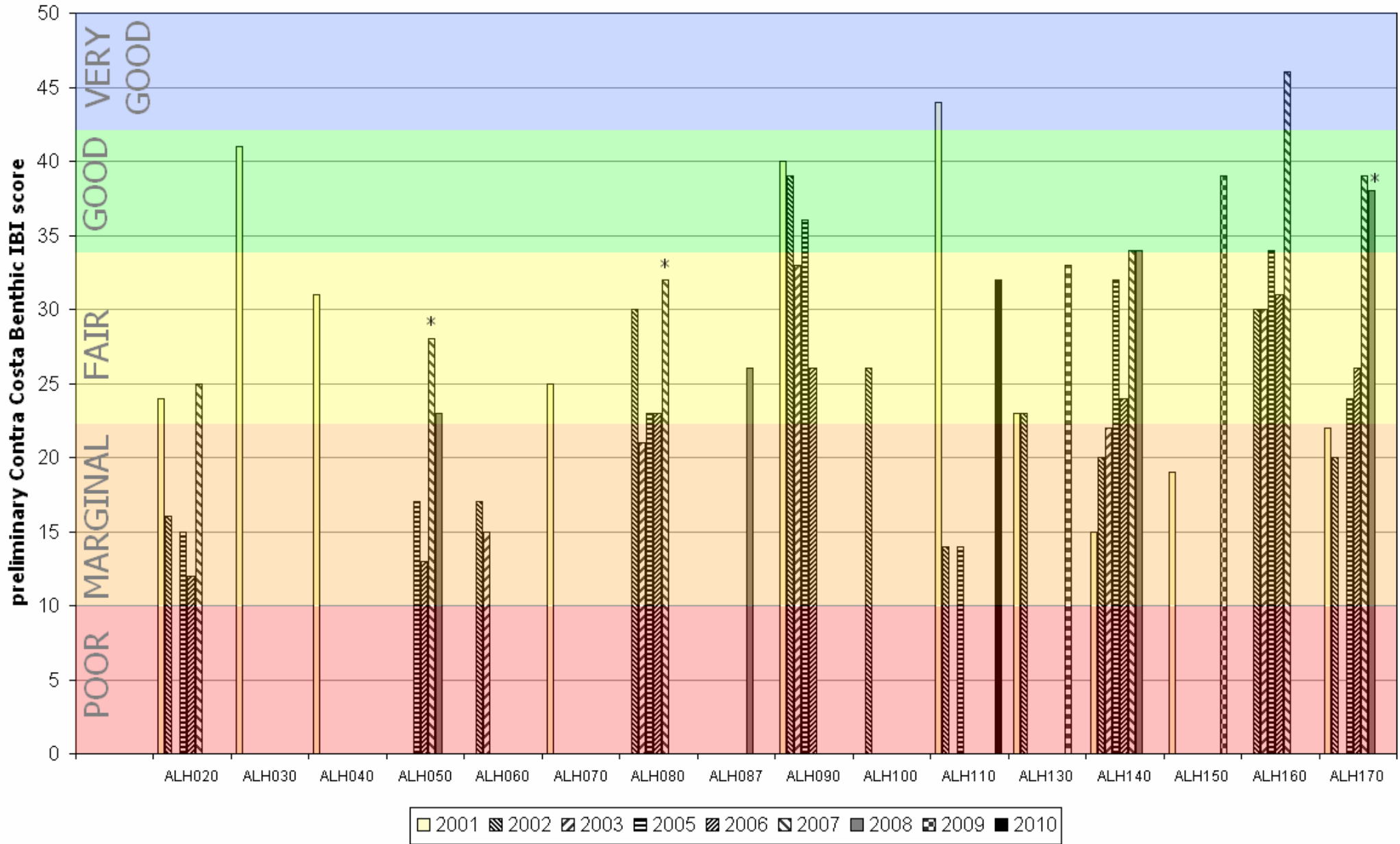
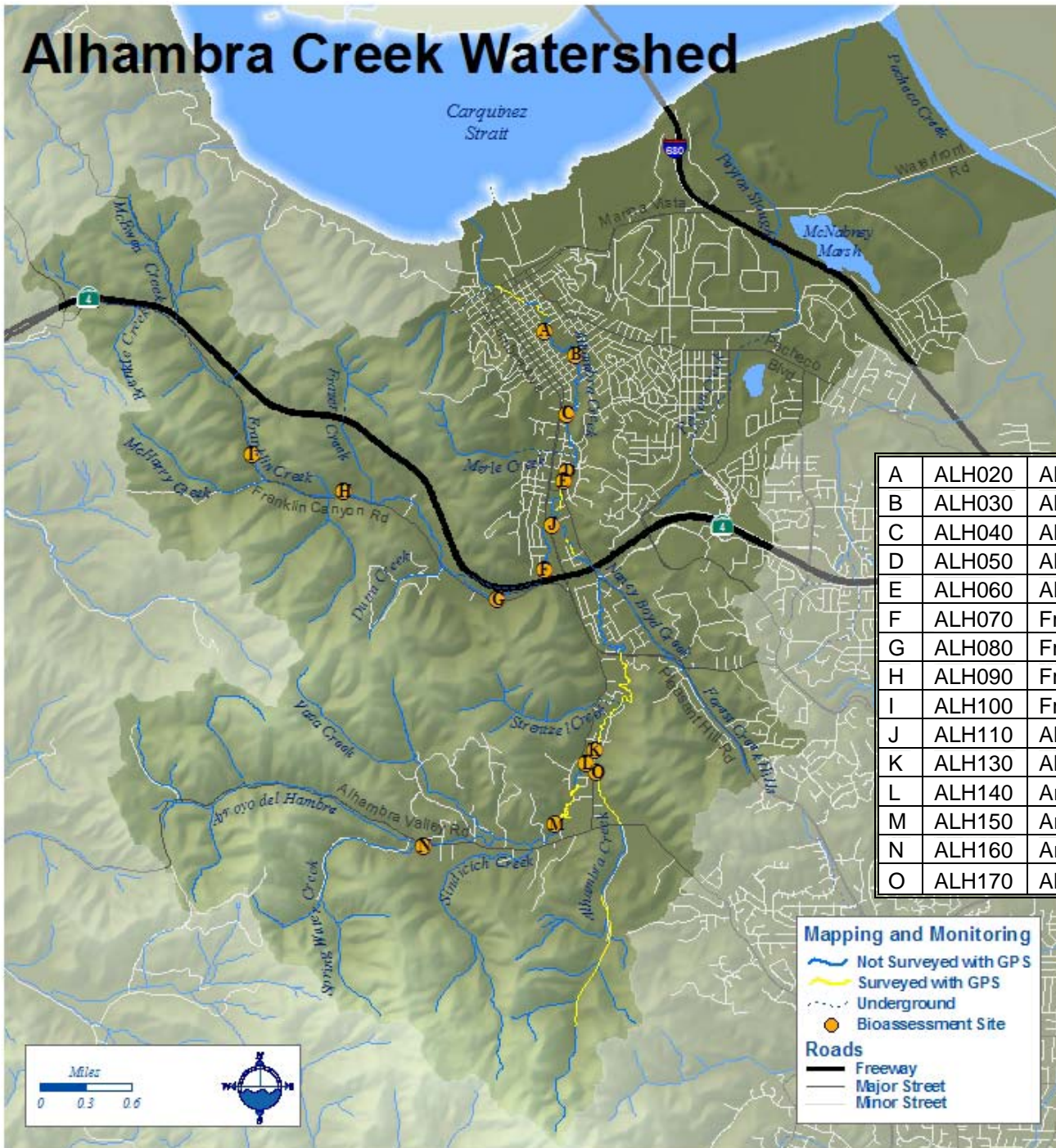
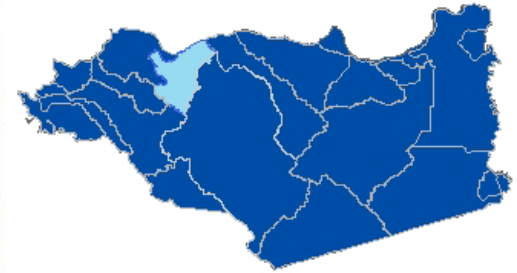


Alhambra Creek



* denotes that the sample has fewer than 500 organisms

Alhambra Creek Watershed



| | | |
|---|--------|---|
| A | ALH020 | Alhambra Cr. above Susana St. |
| B | ALH030 | Alhambra Cr. between Soto and Allen streets |
| C | ALH040 | Alhambra Cr. Below D Street |
| D | ALH050 | Alhambra Creek AT Martinez Adult School |
| E | ALH060 | Alhambra Cr. Below Alhambra Way |
| F | ALH070 | Franklin Creek at John Muir House |
| G | ALH080 | Franklin Cr. At 1530 Franklin Canyon Road |
| H | ALH090 | Franklin Cr. at Walcott Lane |
| I | ALH100 | Franklin Cr. above 2700 Franklin Canyon Rd. |
| J | ALH110 | Alhambra Cr. above Franklin Cr. |
| K | ALH130 | Alhambra Cr. below Arroyo del Hambre |
| L | ALH140 | Arroyo del Hambre above Alhambra Cr. |
| M | ALH150 | Arroyo del Hambre Creek at Castle Creek Court |
| N | ALH160 | Arroyo del Hambre above Vaca Canyon Rd |
| O | ALH170 | Alhambra Cr. above Arroyo del Hambre |

Mapping and Monitoring

- Not Surveyed with GPS
- Surveyed with GPS
- Underground
- Bioassessment Site

Roads

- Freeway
- Major Street
- Minor Street